



SPI RGB

Voltage	DC24 V
Circuit Design	CV
IC Model	WS2811
Pixels/m	10
Power(w/m)	12w
Max. Run Length	5m
Cutting Length	100mm

Parameters

CRI	CCT	lm/m	w/m	lm/w
--	R	73.68	4.8	15.35
	G	215.47	4.8	44.89
	B	34.56	4.8	7.2
	RGB	305.4	12	25.45

Note:

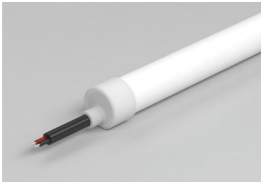
- CV: Constant Voltage CC: Constant Current.
- Max. Run length refers to single side feed in serial connection.
- The given color temperature is the temperature of finished products.
- The given data are typical values. Due to tolerances of the production process and the electrical components,testing parameters can vary up to 10%.
- The Constant Current version supports PWM dimming, but the PWM frequency must be kept below 2kHz.

Cable Type	Schematic Diagram	Specification	Core	Electrical Properties
PVC Cable		OD : 5.0mm		SPI: Red V+, Green DI/DO, Black V-

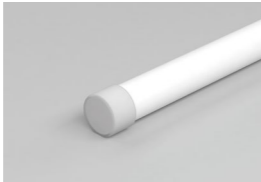


End Cap & Cable Lead Option

Silicone end cap (IP67)



Front Cable Entry



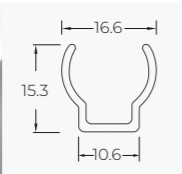
Closed End cap



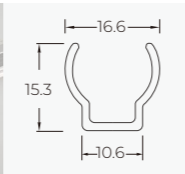
Accessories



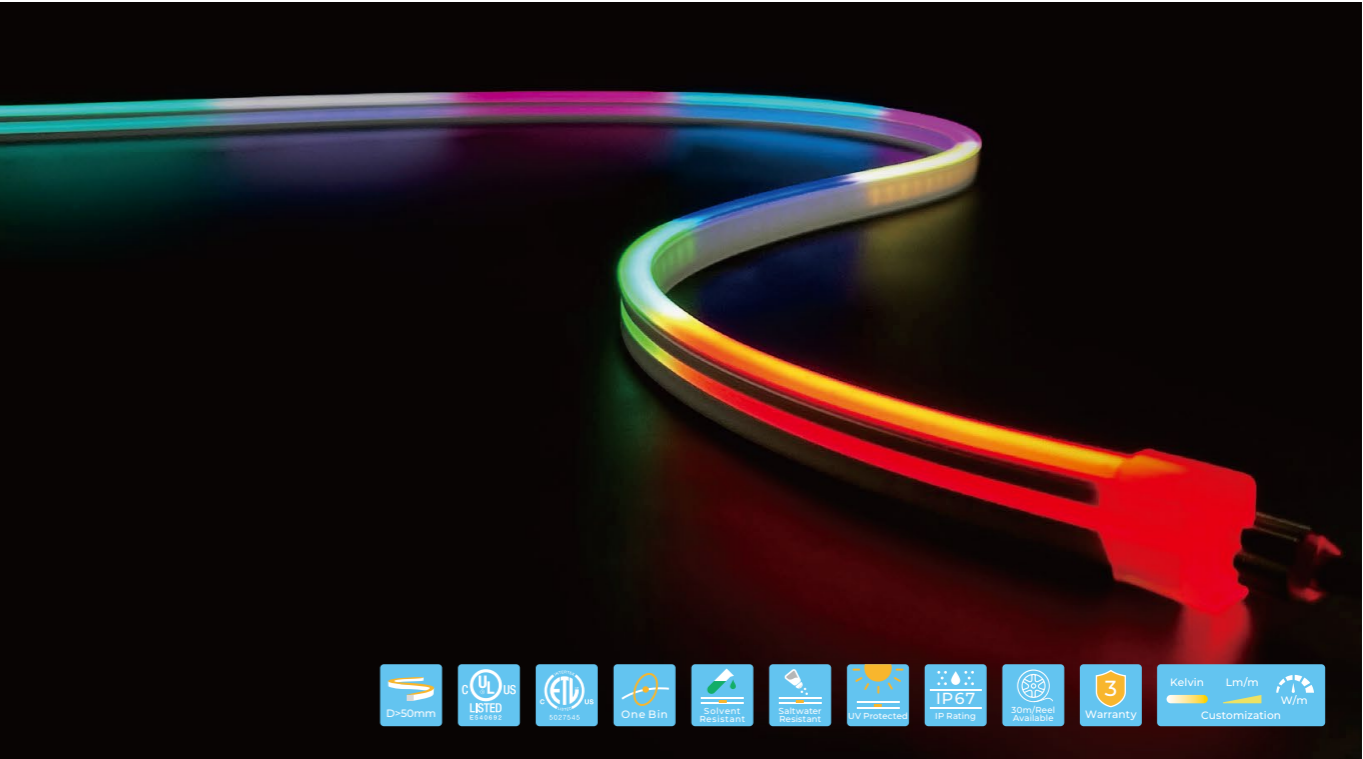
PC Profile
20x16.6x15.3mm(L x W x H)
Accessories:Screw M3x15mm



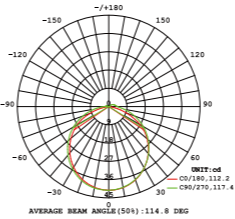
PC Profile
1000(±5)x16.6x15.3mm(L x W x H)
Accessories:Screw M3x15mm



PIXEL S0612

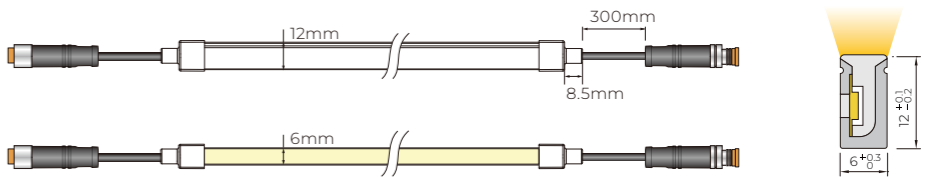


SPI-controlled digital LED neon with WS2811 IC, easy to set up and cost-effective, ideal for small indoor projects. Supports color-changing effects, gradients, chases, pulsating patterns, and animations. Compatible with popular platforms like Madrix, Resolume, and Chromateq, easily programmed and synchronized for stunning visual displays. 3-year warranty, lifespan ≥ 30,000 hours, 1 BIN.



Light Distribution Curve

Dimensions



Basic Parameters

Model No.	NP-S0612
Voltage	DC24V
Power(w/m)	12W
Storage Temperature	-25°C~60°C
Ambient Temperature	Tamin=-25°C, Tamax (Tamax45°C)