



SPI RGB

Voltage	DC24 V
Circuit Design	CV
IC Model	WS2811
Pixels/m	10
Power(w/m)	12w
Max. Run Length	5m
Cutting Length	100mm

Parameters

CRI	CCT	lm/m	w/m	lm/w
--	R	29.09	4.8	6.06
	G	84.19	4.8	17.54
	B	13.54	4.8	2.82
	RGB	119.52	12	9.96

Note:

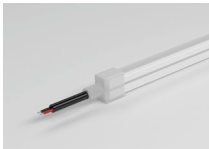
- CV: Constant Voltage CC: Constant Current.
- Max. Run length refers to single side feed in serial connection.
- The given color temperature is the temperature of finished products.
- The given data are typical values. Due to tolerances of the production process and the electrical components,testing parameters can vary up to 10%.
- The Constant Current version supports PWM dimming, but the PWM frequency must be kept below 2kHz.

Cable Type	Schematic Diagram	Specification	Core	Electrical Properties
PVC Cable		OD : 4.0mm		SPI: Red V+, Green DI/DO, Black V-

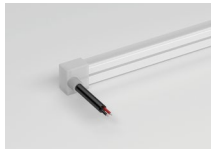


End Cap & Cable Lead Option

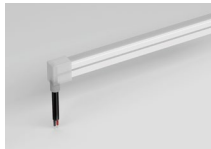
Silicone End Cap (IP67)



Front Cable Entry



Side Cable Entry



Bottom Cable Entry



Closed End cap

Integral End Cap (IP44)



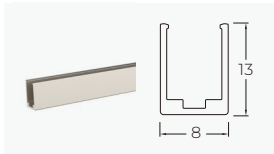
Front Cable Entry



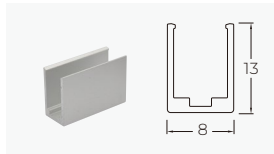
Closed End cap



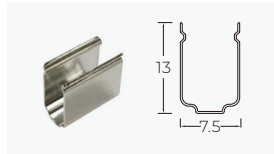
Accessories



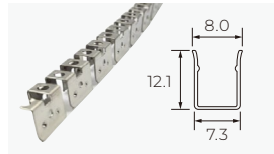
Aluminium Profile
Length: 1m/2m/3m



Aluminium Mounting clips
Length: 2cm

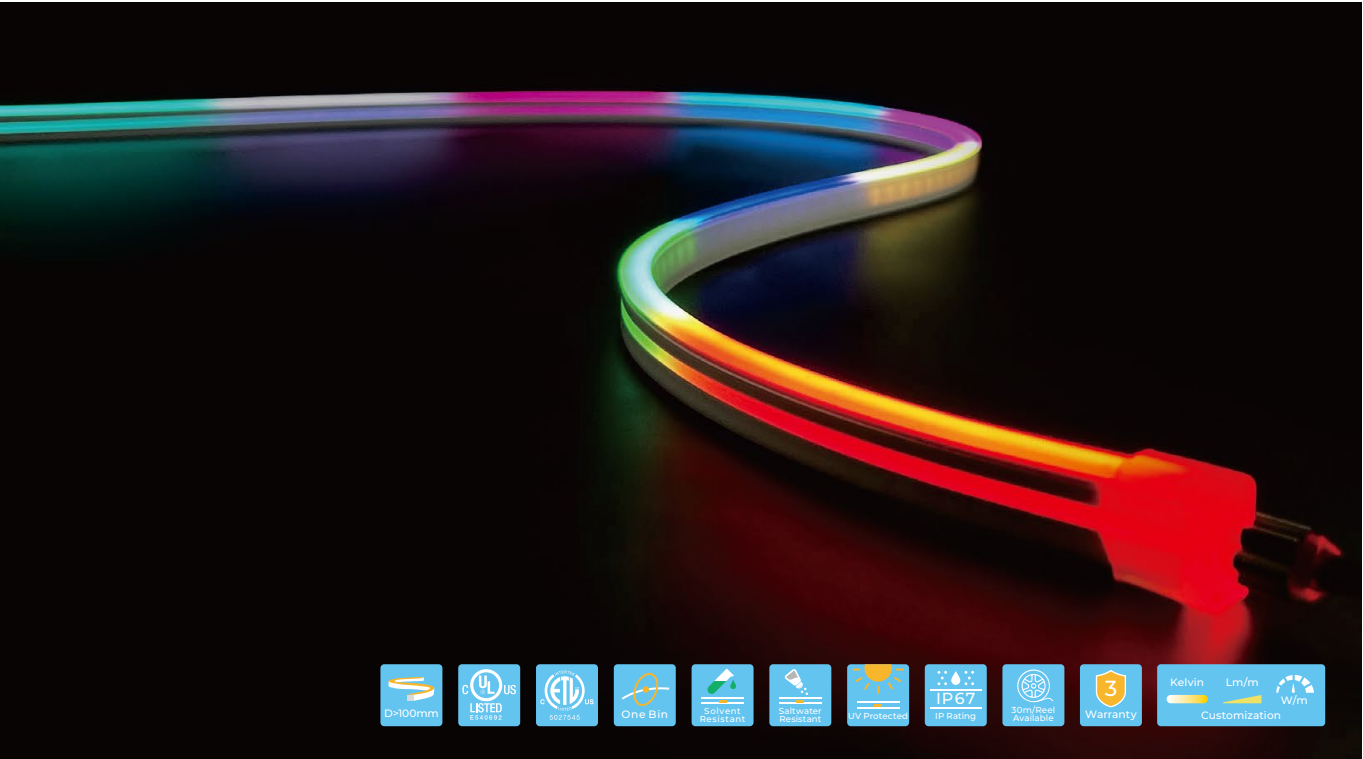


Stainless Steel Mounting clips
Length: 2cm

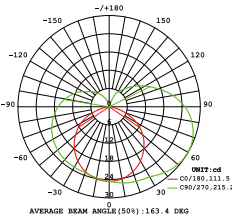


Curved Stainless Steel
mounting profile

PIXEL S0817

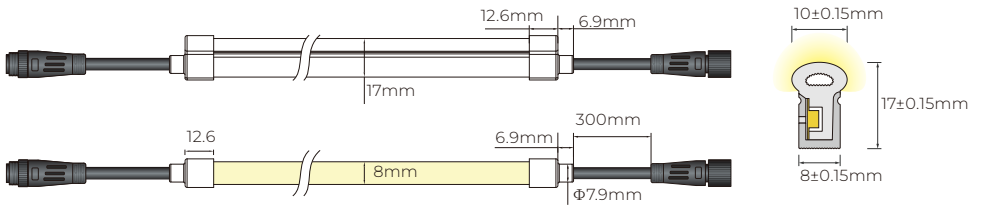


SPI-controlled digital LED neon with WS2811 IC and an arched, wide-angle design, easy to set up and cost-effective, ideal for small indoor projects. Supports color-changing effects, gradients, chases, pulsating patterns, and animations. Compatible with popular platforms like Madrix, Resolume, and Chromateq, easily programmed and synchronized for stunning visual displays. 3-year warranty, lifespan ≥ 30,000 hours, 1 BIN.



Light Distribution Curve

Dimensions



Basic Parameters

Model No.	NP-S0817
Voltage	DC24V
Power(w/m)	12W
Storage Temperature	-25°C~60°C
Ambient Temperature	Tamin=-25°C, Tamax (Tamax45°C)