



SPI RGB

Voltage	DC24 V
Circuit Design	CV
IC Model	WS2811
Pixels/m	10
Power(w/m)	12w
Max. Run Length	5m
Cutting Length	100mm

Parameters

CRI	CCT	lm/m	w/m	lm/w
--	R	38.78	4.8	8.08
	G	111.21	4.8	23.17
	B	17.80	4.8	3.71
	RGB	157.92	12	13.16

Note:

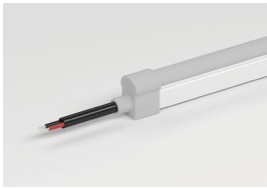
- CV: Constant Voltage CC: Constant Current.
- Max. Run length refers to single side feed in serial connection.
- The given color temperature is the temperature of finished products.
- The given data are typical values. Due to tolerances of the production process and the electrical components,testing parameters can vary up to 10%.
- The Constant Current version supports PWM dimming, but the PWM frequency must be kept below 2kHz.

Cable Type	Schematic Diagram	Specification	Core	Electrical Properties
PVC Cable		OD : 5.0mm		SPI: Red V+, Green DI/DO, Black V-



End Cap & Cable Lead Option

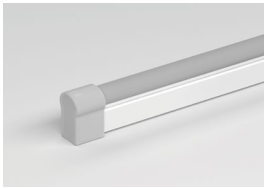
Silicone end cap (IP67)



Front Cable Entry



Side Cable Entry



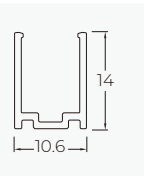
Closed End Cap



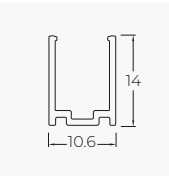
Accessories



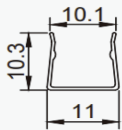
Aluminium Mounting clips
Length: 2cm



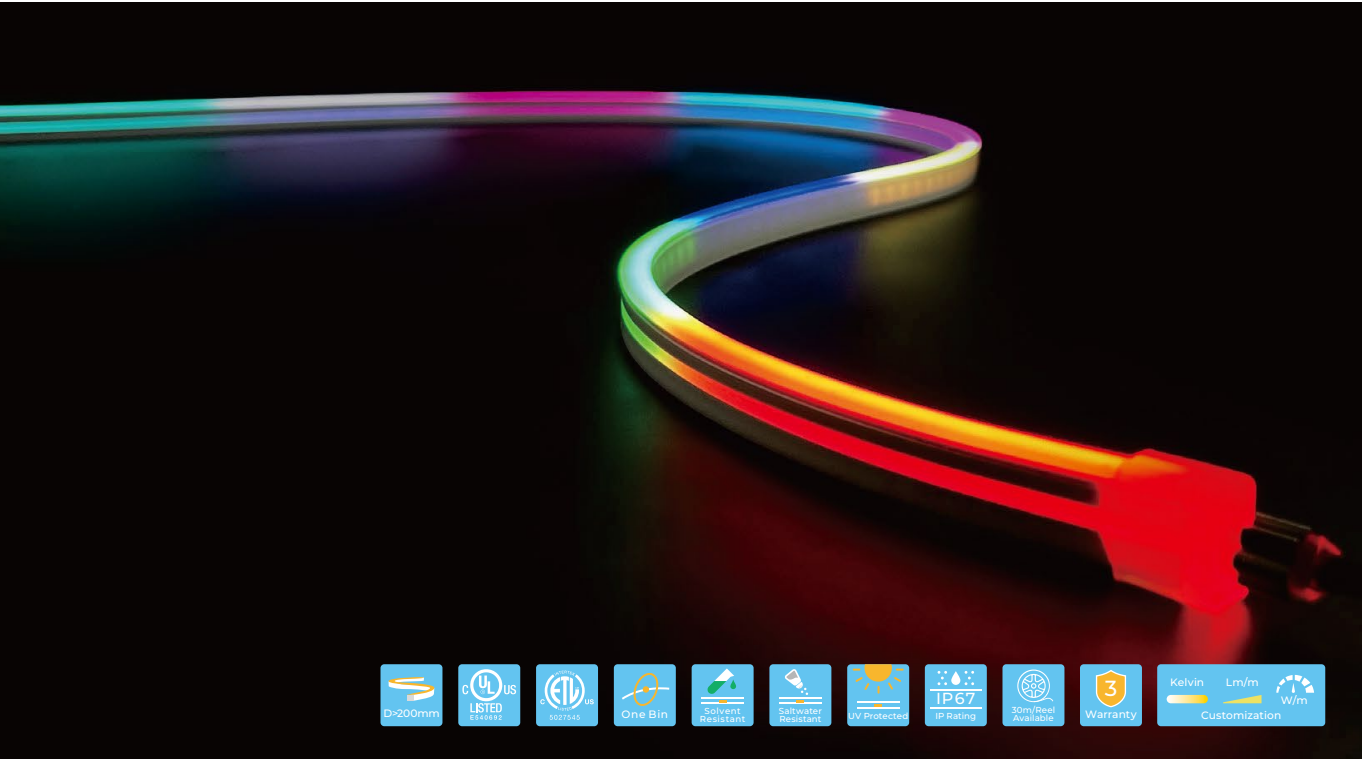
Aluminium Profile
Length: 1m/2m/3m



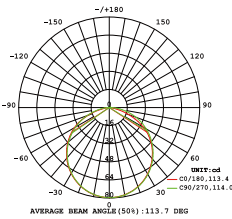
Curved Stainless
Steel mounting profile



PIXEL S1212

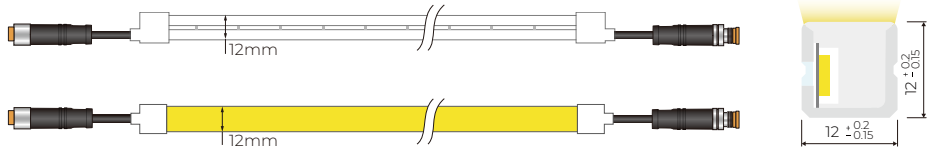


SPI-controlled digital LED neon with WS2811 IC, easy to set up and cost-effective, ideal for small indoor projects. Supports color-changing effects, gradients, chases, pulsating patterns, and animations. Compatible with popular platforms like Madrix, Resolume, and Chromateq, easily programmed and synchronized for stunning visual displays. 3-year warranty, lifespan ≥ 30,000 hours, 1 BIN.



Light Distribution Curve

Dimensions



Basic Parameters

Model No.	NP-S1212
Voltage	DC24V
Power(w/m)	12W
Storage Temperature	-25°C~60°C
Ambient Temperature	Tamin=-25°C, Tamax (Tamax45°C)