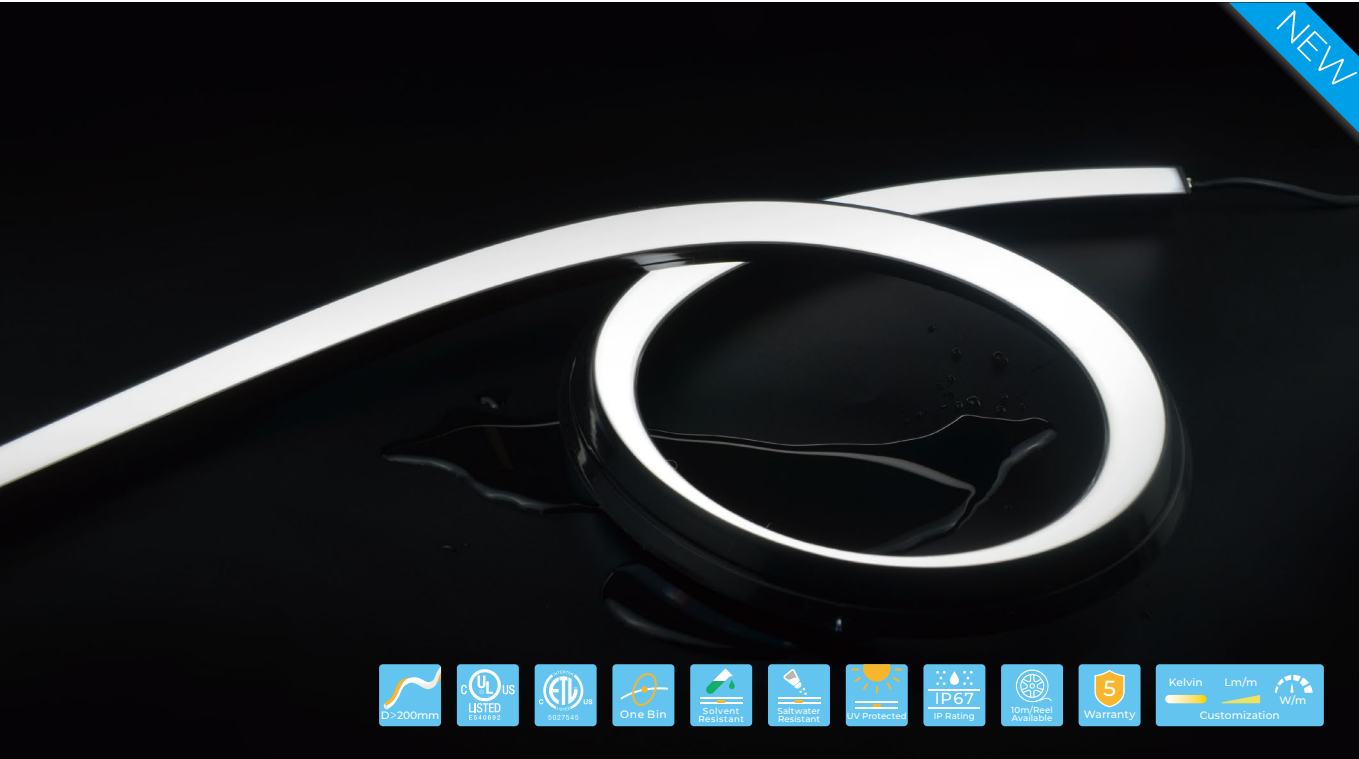
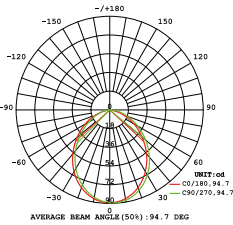


BLACK 3D1615



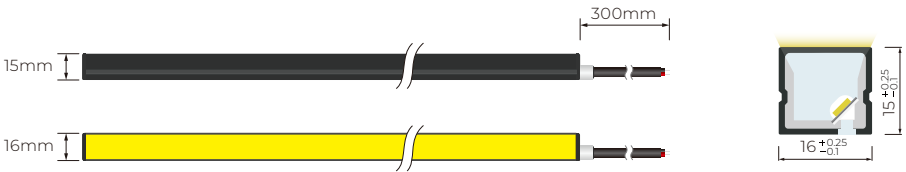
Unique black design for dark backgrounds, with a specialized optical design for high brightness and uniform illumination. 16mm wide luminous surface with top and side bending, adaptable to various installation needs. Dust-resistant matte finish ensures a clean look with uniform, natural light. 5-year warranty, lifespan ≥ 50,000 hours, 1 BIN.



Light Distribution Curve  
( 24V, 10W, 4000K)



Dimensions



Basic Parameters

|                     |                       |
|---------------------|-----------------------|
| Model No.           | NB-3D1615             |
| Voltage             | DC24V                 |
| Power(w/m)          | 5W/10W                |
| Storage Temperature | -25°C~60°C            |
| Ambient Temperature | Tamin=-25°C,Max.+55°C |



Single Color

|                 |        |
|-----------------|--------|
| Voltage         | DC24 V |
| Circuit Design  | CV     |
| Power(w/m)      | 5W/10w |
| Max. Run Length | 5m     |
| Cutting Length  | 35.7mm |

Parameters

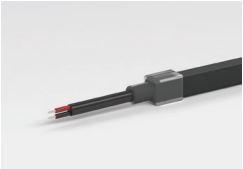
| CRI | CCT       | lm/m | w/m | lm/w |
|-----|-----------|------|-----|------|
| >90 | 2700K±150 | 121  | 10  | 12.1 |
|     | 3000K±150 | 133  | 10  | 13.3 |
|     | 3500K±200 | 138  | 10  | 13.8 |
|     | 4000K±300 | 132  | 10  | 13.2 |
|     | 5000K±400 | 126  | 10  | 12.6 |
|     | 6500K±400 | 127  | 10  | 12.7 |
| --  | Red       | 55   | 10  | 5.5  |
|     | Green     | 132  | 10  | 13.2 |
|     | Blue      | 22   | 10  | 2.2  |
|     | Yellow    | 36   | 10  | 3.6  |
|     | Orange    | 49   | 10  | 4.9  |
|     | Pink      | 126  | 10  | 12.6 |

Note:  
· CV: Constant Voltage CC: Constant Current.  
· Max. Run length refers to single side feed in serial connection.  
· The given color temperature is the temperature of finished products.  
· The given data are typical values. Due to tolerances of the production process and the electrical components,testing parameters can vary up to 10%.  
· The Constant Current version supports PWM dimming, but the PWM frequency must be kept below 2kHz.



Cable Lead Option

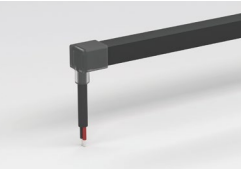
Silicone End Cap (IP67)



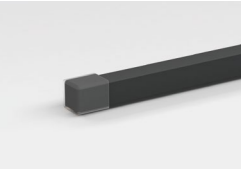
Front Cable Entry



Side Cable Entry

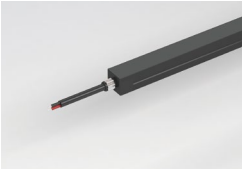


Bottom Cable Entry



Closed End Cap

Integral End Cap (IP67)



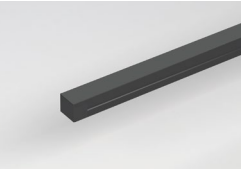
Front Cable Entry



Side Cable Entry



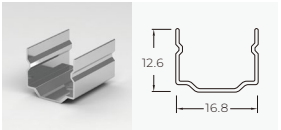
Bottom Cable Entry



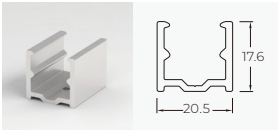
Closed End Cap



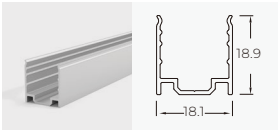
Accessories



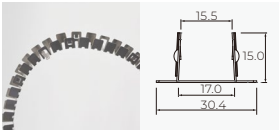
Stainless Steel Mounting clips  
Length: 2cm



Aluminium Mounting clips  
Length: 2cm



Aluminium Profile  
Length: 1m/2m/3m



Curved Stainless  
Steel mounting profile



Use with the profile